

SHIMANO

SHIMANO (EUROPA) GmbH.
Kleinhülsen 1-3 4010 Hilden, Germany
Tel. 02103-5005-0

SHIMANO AMERICAN CORPORATION
One Shimano Drive, P.O. Box 19615, Irvine,
California U.S.A. 92718 Tel. (714) 951-5003

Small parts list for after market.

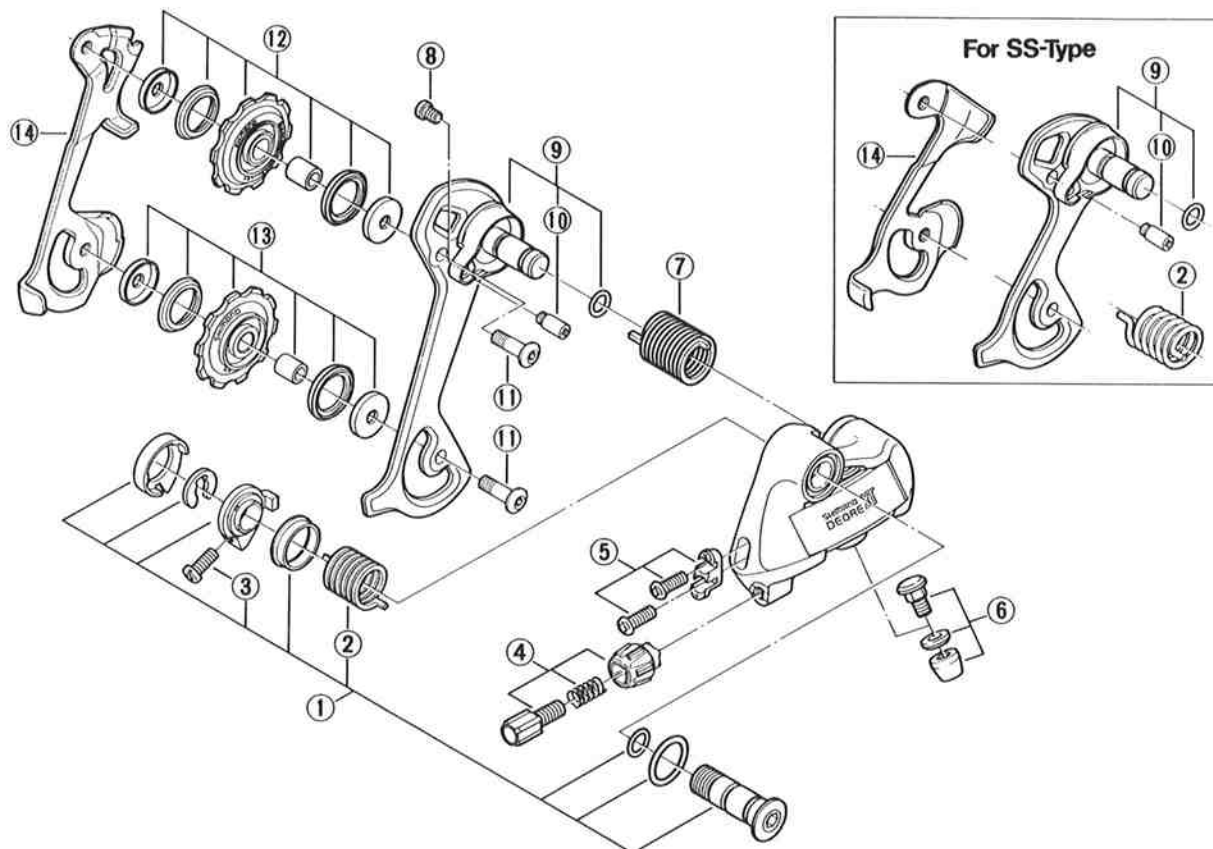
- You may photocopy this sheet and use it as an order form.
- Sie können dieses Blatt kopieren und als Bestellformular verwenden.
- Vous pouvez photocopier cette feuille et l'utiliser comme bon de commande.
- Dit blad kan gecopieerd en als bestelformulier gebruikt worden.
- Potete fotocopiare questo foglio e usarlo come modulo di commissione.

RD-M735-SS

Rear Derailleur
DEORE XT / Short Cage

RD-M735-SGS

Rear Derailleur
DEORE XT / Super Long Cage



	Q'TY	ITEM NO.	PART NO.	DESCRIPTION
		* 1	53H 9811	Bracket Axle Assembly for SS-Type
			53H 9812	Bracket Axle Assembly for SGS-Type
		2	53A 0500	B-Tension Spring for SS-Type
			556 0200	B-Tension Spring for SGS-Type
		3	556 2500	B-Tension Adjusting Bolt (M4 x 12)
		* 4	52A 9801	Cable Adjusting Barrel Unit
		5	53B 9801	Stroke Adjusting Screws (M4 x 13) & Plate
		* 6	530 9804	Cable Fixing Bolt Unit
		7	556 1300	P-Tension Spring
		8	557 1300	Plate Fixing Screw (M4 x 5.5)
		9	53C 9802	Outer Plate Assembly for SS-Type
			53C 9804	Outer Plate Assembly for SGS-Type
		10	557 1500	Plate Stopper Screw
		11	569 5420	Pulley Bolt (M5 x 16.1)
		12	53A 9805	Guide Pulley Unit
		13	53A 9806	Tension Pulley Unit
		14	53A 0400	Inner Plate for SS-Type
			556 0900	Inner Plate for SGS-Type